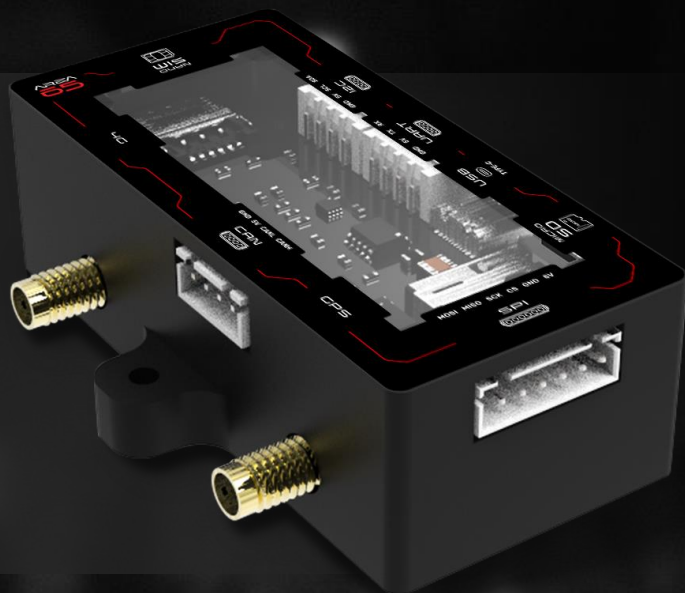


4G

TELEMETRY



4G
LTE

Worldwide coverage compatibility



Multi-constellation GNSS for location tracking



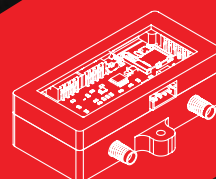
On-board local data storage



4 communication interfaces: CAN, UART, I2C, SPI



Remote data monitoring via Area 65 cloud server



INTRODUCTION

AREA 65 4G TELEMETRY...

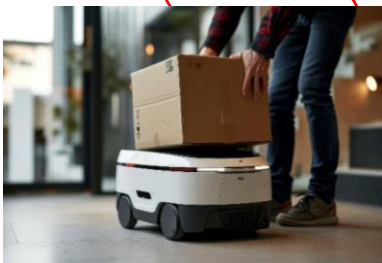
is a plug-and-play LTE Cat 1 module optimized for M2M and IoT applications. Designed for efficiency and reliability, it provides cost-effective, low-power LTE connectivity with data rates up to 10 Mbps downlink and 5 Mbps uplink.

Ideal for IoT solutions that do not require high-speed broadband but demand the long-term stability and coverage of LTE networks, Area 65 4G Telemetry module ensures dependable data transmission across diverse environments.

The module supports multiple interface options – **UART, CAN, I2C, and SPI** – enabling easy integration with existing systems for seamless wireless data transfer. It is **globally compatible** and features **multi-constellation GNSS** for accurate positioning, making it ideal for asset tracking and vehicle fleet management.

For real-time visibility, **AREA 65 Live Monitoring** allows users to access and monitor their data anytime through a secure **web-based cloud platform**. The intuitive customizable GUI lets users upload background images, define data labels, parse input streams, and visualize parameters through graph plotting, data logging, and file sharing.

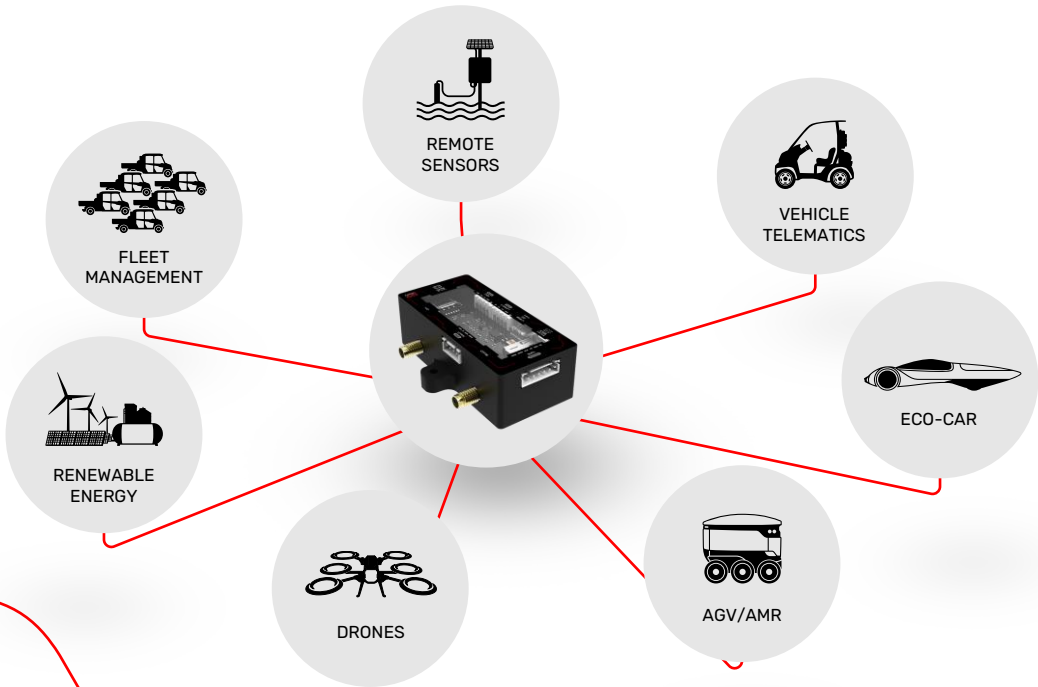
Additionally, the module includes an **embedded microSD card slot** for local data storage, ensuring data integrity even during network interruptions.



APPLICATION SCENARIOS

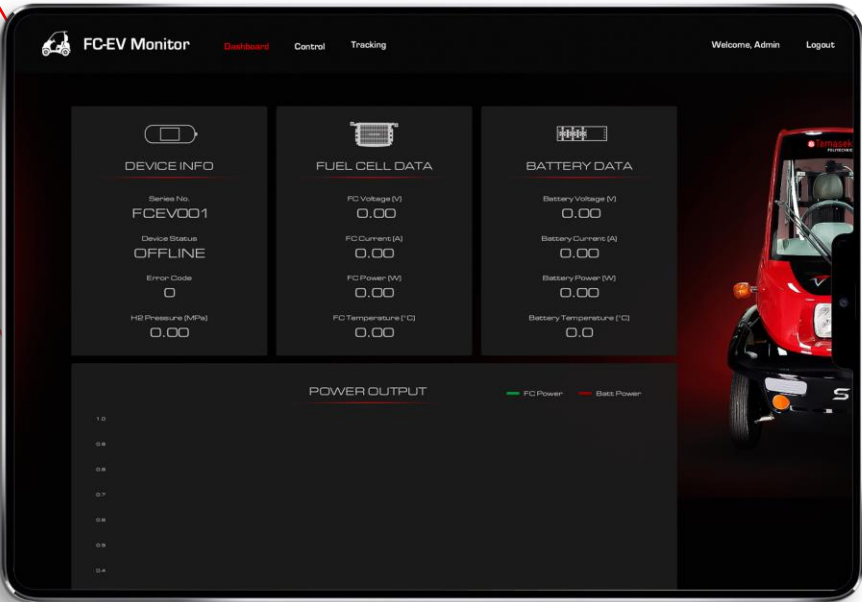
TRANSMIT

Connect your device and transmit data wirelessly via 4G network.



RECEIVE

Monitor your data live anywhere by logging into Area 65 cloud server via web browser.



PRODUCT SPECIFICATIONS

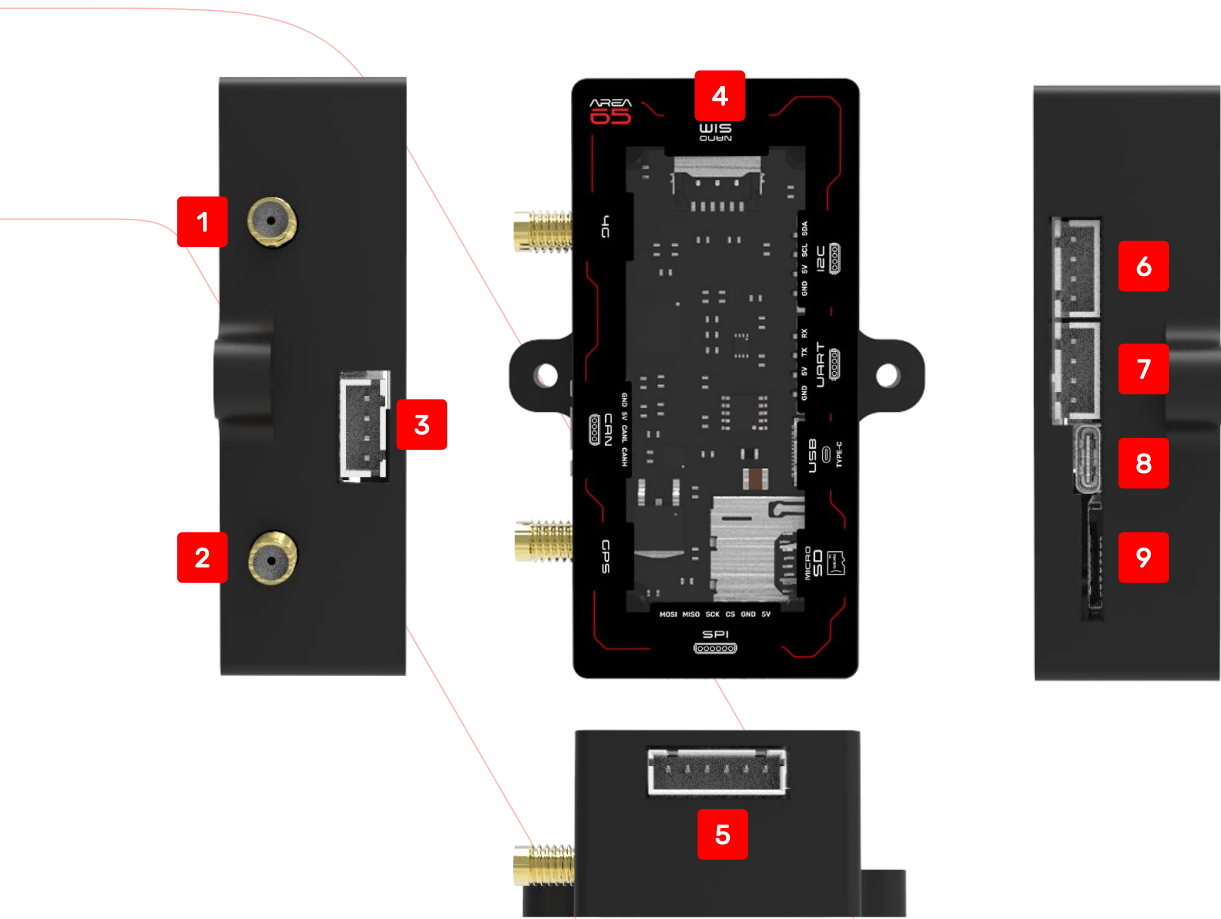
GENERAL	
Product Name	Area 65 4G Telemetry
4G Module	Quectel EC21
Power Requirement	5V @ 1A
Max Dimension	78 x 57 x 24mm
Product Weight	45g
CONNECTIVITY	
Wi-Fi Capability	Yes
Expandable 4G Connectivity	Optional CAT-1 or CAT-4 modules to suit varying project bandwidth requirements (10Mbps – 150Mbps)
Supported Regions	Worldwide (contact us for full coverage details)
Default LTE-FDD Bands	B1, B3, B5, B7, B8, B20
LTE-FDD Data Rate (Mbps)	Max 10 (DL)/ 5 (UL)
Built-in GNSS	GPS GLONASS BeiDou (Compass) Galileo
INTERFACES	
UART (TTL, 5V)	x1
CAN 2.0	x1
SPI (TTL, 3.3V)	x1
I2C (TTL, 3.3V)	x1
USB-C	x1 (for power supply/ firmware upgrade)
SIM Card Slot	x1 Nano SIM
On Board Local Storage Card Slot	x1 microSD (max 32GB, not included)
SOFTWARE & GUI	
Data Protocol	Compact JSON (refer to integration guide)
Graphic User Interface (GUI)	Log in to Area 65 cloud via web browser
GUI Features (coming soon)	User configurable data label, graph plotting, log/save data file, print screen
Custom GUI	Yes, contact Area 65
Local Deployable Server	Yes, contact Area 65

Technical specification is accurate at the time of writing and subject to changes and modifications.

HARDWARE INTERFACES

FLEXIBLE

The module supports four communication interfaces – CAN, UART, I2C, and SPI, with the flexibility to operate them simultaneously. Power can be supplied through any of these interfaces or through the USB-C port.



1.	4G SMA	4.	Nano SIM card holder	7.	UART
2.	GPS SMA	5.	SPI	8.	USB-C
3.	CAN	6.	I2C	9.	microSD card holder

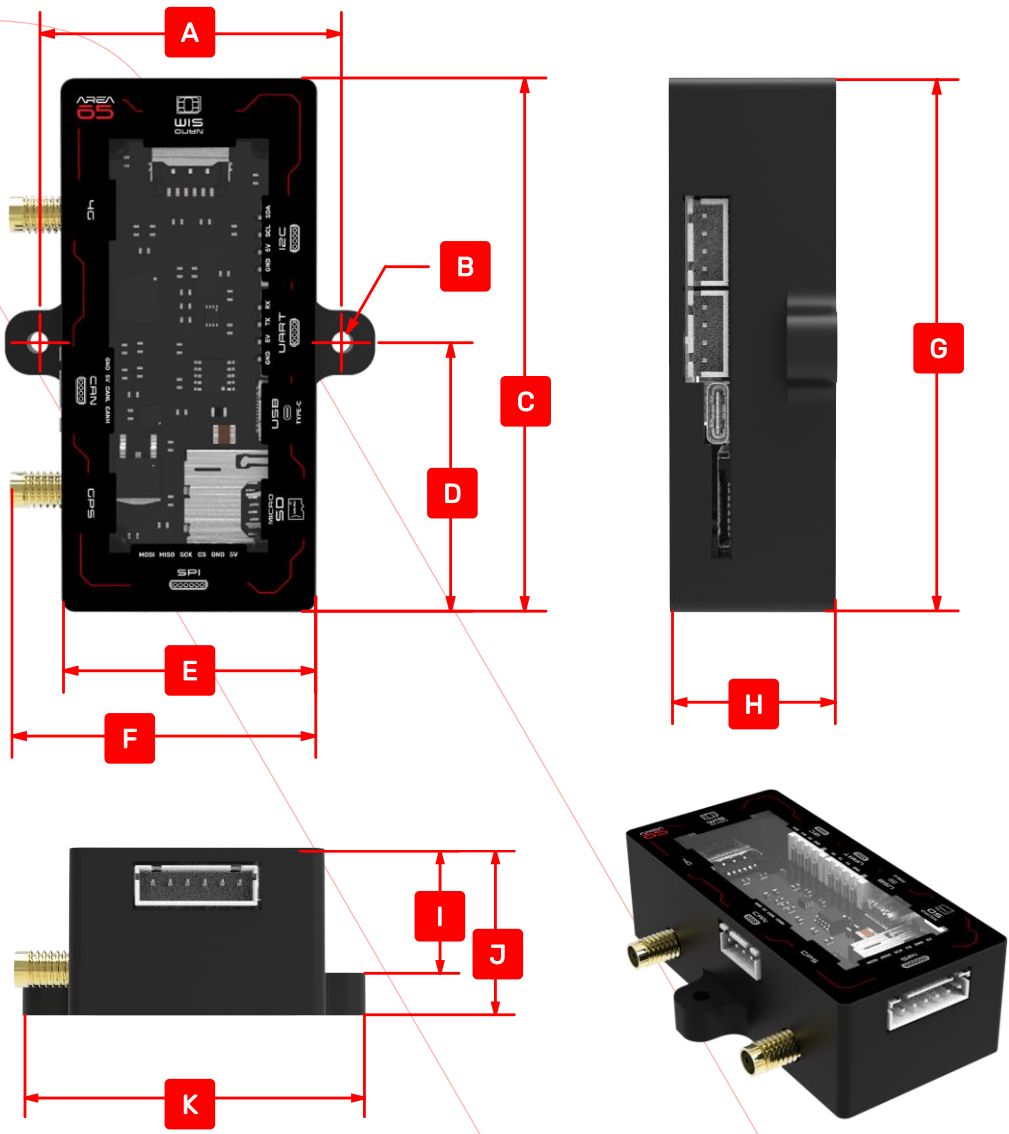
Note

User needs to open the casing to install the Nano SIM card. 2.5mm Allen key is required (not included).

MECHANICAL DIMENSIONS

COMPACT

Area 65 4G Telemetry weighs only 45g. Mounting holes are provided to allow secure installation near your device.



ALL DIMENSIONS IN MM

A	47.0	E	37.0	I	17.0
B	Ø3.3 (2x through holes)	F	46.0	J	24.0
C	77.5	G	77.5	K	57.0
D	38.8	H	24.0		

WHAT'S IN THE BOX

GET STARTED IN MINUTES

All required cables and connectors are provided. Simply install a Nano SIM card and an optional microSD card.



Component	Quantity
4G Telemetry Module	1
4G + GPS 2-in-1 antenna	1
4-Pin XH 2.5 with wires (for CAN, UART, I2C)	3
6-Pin XH 2.5 with wires (for SPI)	1
USB-C cable (for power supply/ firmware update)	1

PRICING MODEL

Flexible add-on subscriptions tailored to your usage needs.

Basic	Professional	Premium
<ul style="list-style-type: none">▪ Area 65 4G Telemetry▪ Local microSD card data storage▪ Area 65 Live Monitoring web-based GUI (1 user)▪ 1 GB cloud storage▪ Email/chat support	<p>Basic +</p> <ul style="list-style-type: none">▪ Area 65 Live Monitoring web-based GUI (3 users)▪ 3 GB cloud storage	<p>Professional +</p> <ul style="list-style-type: none">▪ Area 65 Live Monitoring web-based GUI (unlimited users)▪ 15 GB cloud storage▪ 90 days data back up
<p>US\$ 399.00</p> <p>(one-time cost)</p>	<p>US\$ 399.00 +</p> <p>US\$ 9.90 Monthly or US\$ 99.90 Annually</p> <p>(Cancel anytime; 2 months free for annual subscription)</p>	<p>US\$ 399.00 +</p> <p>US\$ 14.90 Monthly or US\$ 149.90 Annually</p> <p>(Cancel anytime; 2 months free for annual subscription)</p>

WHERE TO BUY

Direct at Area 65 Technologies: <https://www.area65tech.com/4g-telemetry>

Your local distributor:



+65 9815 8945 | hello@area65tech.com

Area 65 Technologies Pte. Ltd. c/o Spectronik Pte. Ltd.

8 Cleantech Loop, #07-13/14/15/16 JTC Cleantech Three, Singapore 637145

Scan QR code or visit our website
www.area65tech.com for more info.



area65tech



@area65tech



area65tech



area65tech

